

## Structure function

### 1 Type of charging security cable



Lightning coiled cable

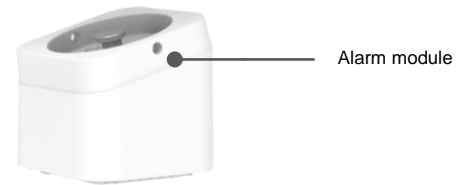
Type -c coiled cable

Micro-usb coiled cable

### 2 Components

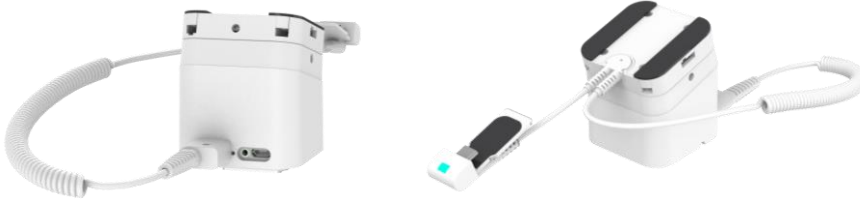


Phone/Tablet frame



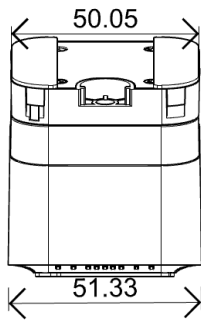
Alarm module

### 3 Installation way with desktop

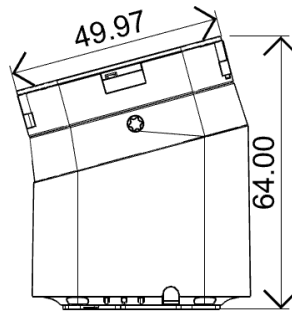


using 3M adhesive

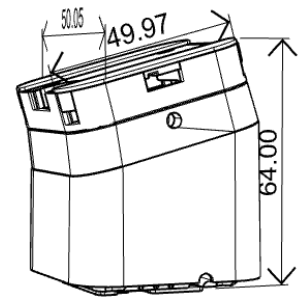
## Product dimension



Left view



Back view



Protection sensor

## Clamp protection range



### The width and thickness range of clamp protection

Unit(mm)	Code	Width a	Thickness b	
Two-way protection Range	PJ018A	$57 \leq a \leq 90$	$6 \leq b \leq 11$	
Four-way protection Range	Code	Width a	Length c	Thickness b
	PJ018C	$57 \leq a \leq 90$	$110 \leq c \leq 190$	$6 \leq b \leq 11$